

# CanOPI

## Professional OPI for Windows NT, 2000 & XP

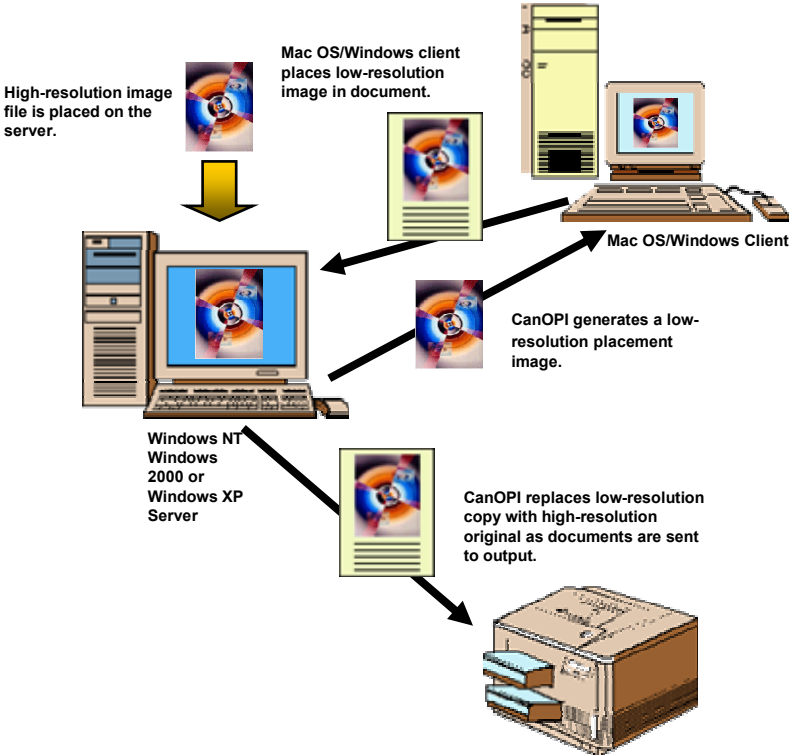
### Reduce Network Traffic, Increase Productivity

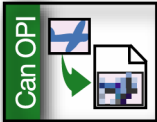
CanOPI® is an integrated Open Prepress Interface (OPI) software solution for the publishing industry. CanOPI takes full advantage of distributed client/server networks and eliminates the need to manipulate large, high-resolution image files. Users store a central archive of JPEG, EPS, DCS, TIFF, and Scitex images on a Windows NT®, 2000® or XP™ file server, from which CanOPI automatically generates low-resolution files for page layout work. Users then work with these corresponding low-resolution, For-Position-Only (FPO) files, in their documents. At print time, the high-resolution image replaces the FPO image, while retaining all design adjustments made to the FPO. CanOPI quickly frees client workstations for further work and provides a dramatic reduction in network traffic, therefore increasing the productivity of your prepress workflow.

### Easy to Install and Configure

Installation and configuration of CanOPI is a snap using the CanOPI Installation Wizard and the Windows NT Administration Wizards which guide you through the process. By following the steps on the screen, you can create Mac OS®-accessible folders, set access privileges, and configure OPI printers. Additionally, CanOPI's user-friendly interface utility provides a single location from which users can define FPO Sample Generation, Picture Replacement, Job Spooling parameters, and more.

- Generates Web-ready JPEG.
- Create PC EPS files with embedded TIFF preview from PDF files.
- Maintains ICC color profile information when generating low-resolution TIFF FPO's.
- Generates printable preview data from Adobe® Illustrator® EPS files.

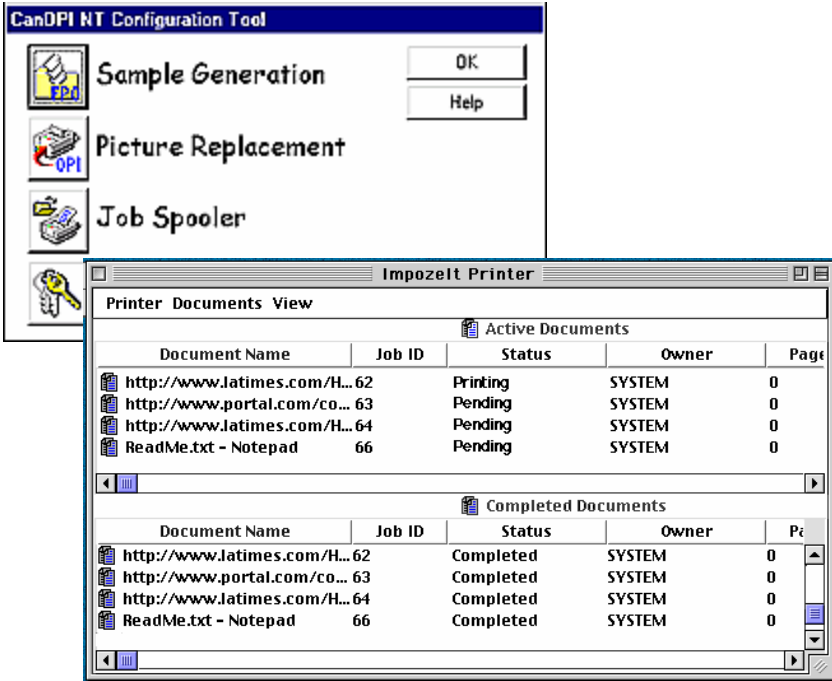




# CanOPI

## Sample Generation Options

- Generates Web-ready JPEG files from TIFF, Handshake CT, Handshake LW, JPEG and Photoshop Native high-resolution files. For Web-ready JPEG images, Sample Generation automatically converts CMYK data to RGB, and bitmap data to grayscale. CanOPI also creates JPEGs from Photoshop EPS, and Illustrator EPS with thumbnails.
- Generates JPEG thumbnails at user-defined dimensions for asset-management systems from TIFF, Handshake CT, Handshake LW, JPEG, Photoshop Native, Photoshop EPS/DCS, and Illustrator EPS with Thumbnail preview data.
- Maintains ICC color profile information when generating low-resolution TIFF FPO files from Photoshop™ high-resolution TIFF files, or EPS/DCS FPO's from EPS/DCS high-resolution files.
- Generates printable preview data from Adobe Illustrator 7.0/8.0/9.0 EPS files, when saved with the "Include Document Thumbnails" option.
- An additional Acrobat plug-in enables the creation of PC EPS files with an embedded TIFF preview from PDF files. Once an EPSF is generated from the PDF, an FPO is automatically generated.
- The "Store Folder" of the HotFolder Sample Generation configuration now functions like an InPlace event-driven configuration. Rename, delete, and save events are automatically tracked and processed, eliminating the need to resave edited images back into the Input folder to force FPO updates.
- The "Rescan Now" option enables administrators to rescan complete InPlace and HotFolder volumes to ensure that all high-resolution images have associated up-to-date low-resolution sample files.
- Supports additional CCITT compression types.
- Automatically deletes samples when high-resolution images are deleted.



## Advanced Print Queue Management

Administer server print queues through the familiar Windows NT, Print Manger or control them from any platform, either remotely or locally, with IPtech's optional PrintQMgr™. PrintQMgr incorporates a user-friendly Java™ -based graphical user interface that can be accessed by any Mac OS, Windows® 95/98/2000, Windows NT®, or Unix® user. With PrintQMgr, you can view, pause, resume, delete, rearrange, resubmit, and transfer jobs within or between print queues.

